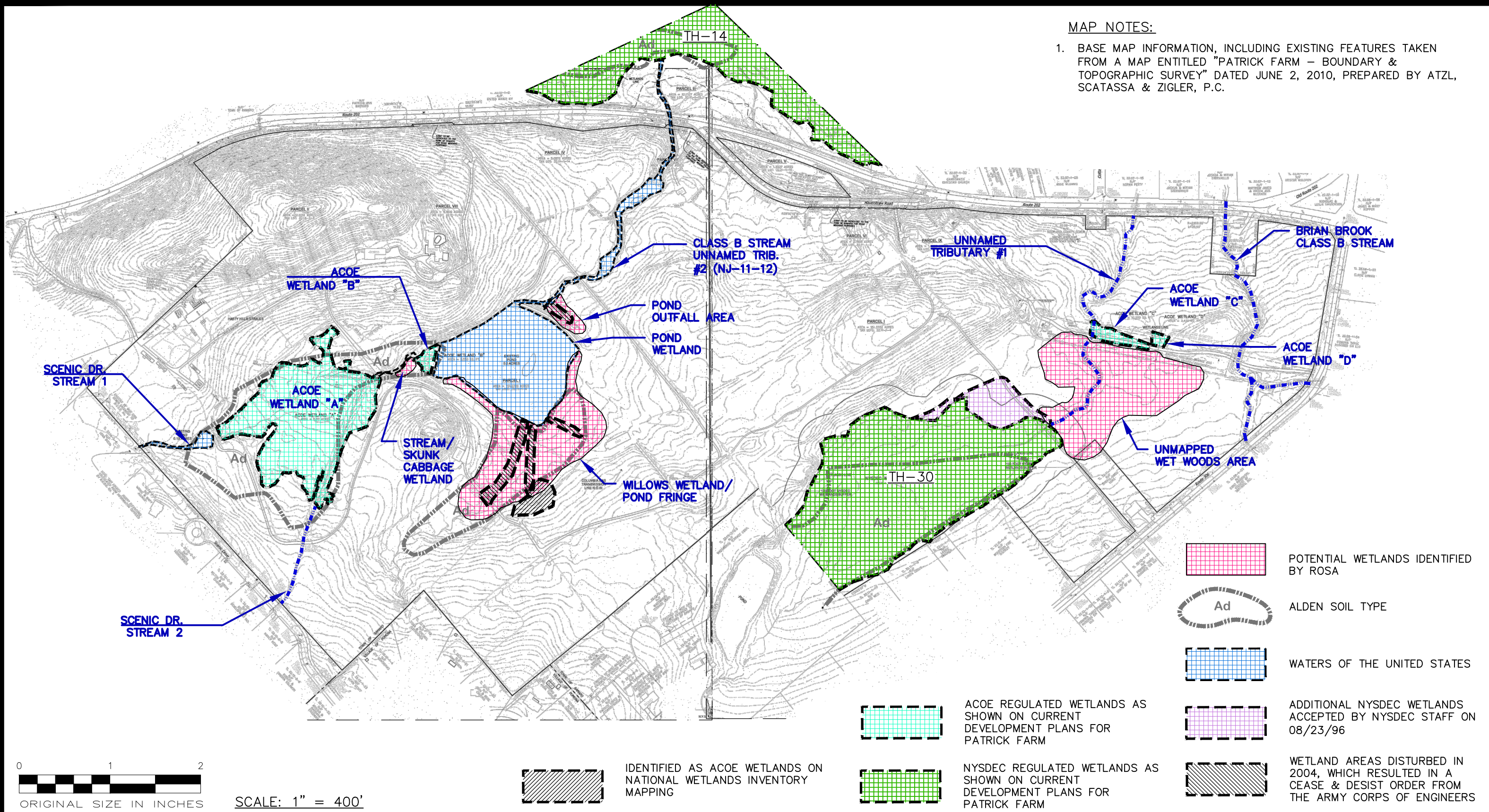


MAP NOTES:

1. BASE MAP INFORMATION, INCLUDING EXISTING FEATURES TAKEN FROM A MAP ENTITLED "PATRICK FARM - BOUNDARY & TOPOGRAPHIC SURVEY" DATED JUNE 2, 2010, PREPARED BY ATZL, SCATASSA & ZIGLER, P.C.



0 1 2
 ORIGINAL SIZE IN INCHES
 SCALE: 1" = 400'

IDENTIFIED AS ACOE WETLANDS ON NATIONAL WETLANDS INVENTORY MAPPING

ACOE REGULATED WETLANDS AS SHOWN ON CURRENT DEVELOPMENT PLANS FOR PATRICK FARM
 NYSDEC REGULATED WETLANDS AS SHOWN ON CURRENT DEVELOPMENT PLANS FOR PATRICK FARM

POTENTIAL WETLANDS IDENTIFIED BY ROSA
 ALDEN SOIL TYPE
 WATERS OF THE UNITED STATES
 ADDITIONAL NYSDEC WETLANDS ACCEPTED BY NYSDEC STAFF ON 08/23/96
 WETLAND AREAS DISTURBED IN 2004, WHICH RESULTED IN A CEASE & DESIST ORDER FROM THE ARMY CORPS OF ENGINEERS



REV	DATE	DESCRIPTION
1	03/07/12	GENERAL REVISIONS

David Clouser & Associates
 Professional Engineers & Land Surveyors

dca
 1 Paradies Lane - Suite 200 New Paltz, NY 12561
 Phone: (845) 256-9600 Fax: (845) 256-9700
 www.dcaengrs.com

NOMINATED WETLANDS OF PATRICK FARM MAP

PATRICK FARM
 ROCKLAND ORGANIZED FOR SUSTAINABILITY & A SAFE AQUIFER
 STATE ROUTES 202/306 TOWN OF RAMAPO
 ROCKLAND COUNTY, NEW YORK

DATE	DRAWN BY
2/10/12	AVW
PROJECT NO.	
80039	
SHEET NO.	
N-1	