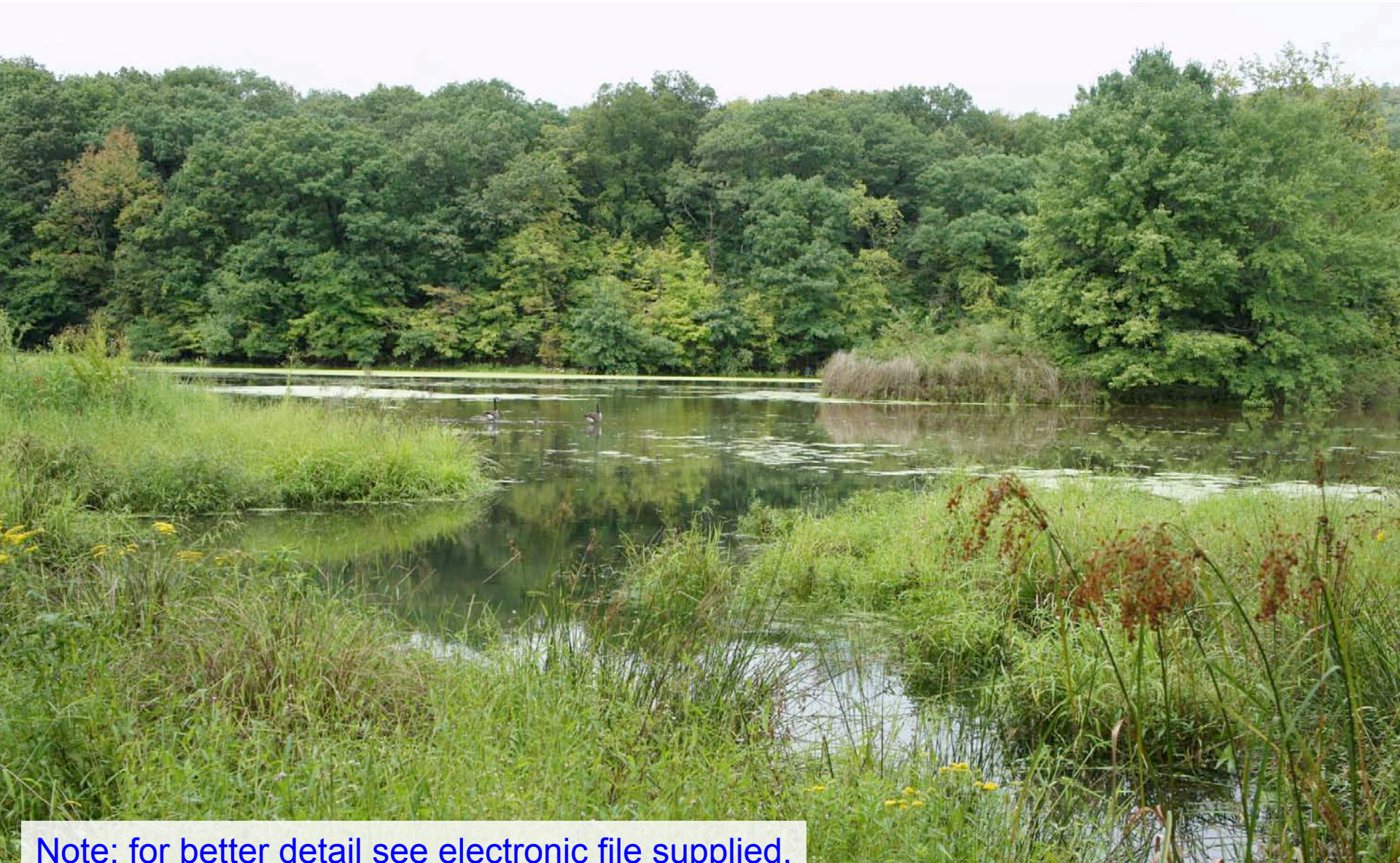


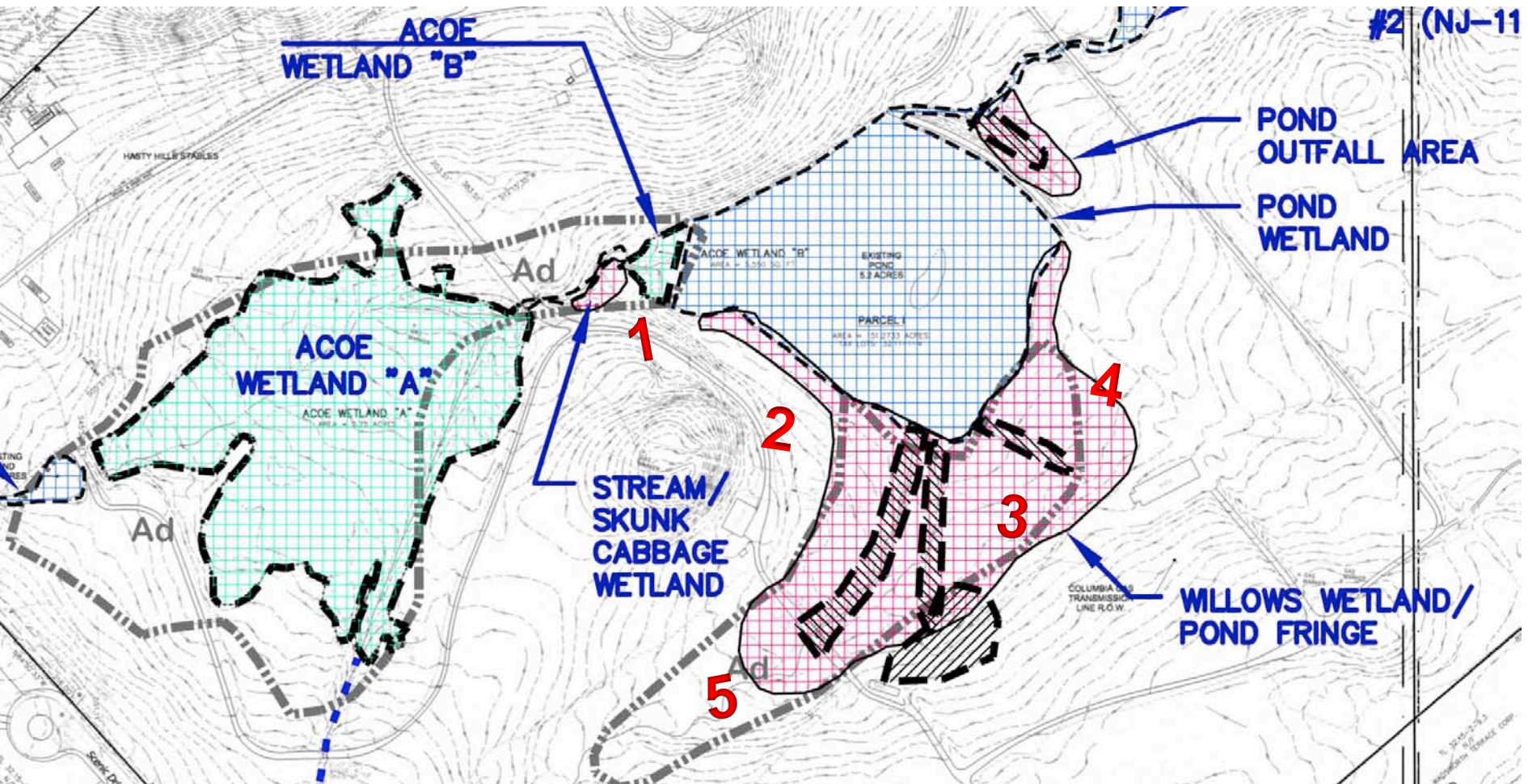
# Exhibit 9 - of Wetland Areas in Pink Cross hatched areas on map in Exhibit 4



Note: for better detail see electronic file supplied.



This is an extract of the pink cross hatched areas on Exhibit 4; ACOE enforcement in dashed areas around pond. Ad soil designations shown. More details and legend on Exhibit 4. Man made trenching in area 3 put in place to drain wetlands







## **(1) Connection from ACOE A to Pond**

Note, strong stream and current toward pond with wetland plants on both sides of banks. Banks need to be delineated



Skunk cabbages around stream in summer, these small federal wetlands connected to WOUS are not indicated on maps







## **(1) Connection to Pond – Small Wetland**

ACOE wetland A connects to Wetland B which is located in the pond.  
Wetland plants wrap around the southern edge of pond.





**(2) Southwest Edge**



Note pond is shallow with  
Wetland vegetation surrounding it







## **(2) Looking East Toward Farmhouse**

This show the south margin of the pond facing the east edge with a number of large willow trees. The east-south-east sections should be evaluated.





Disturbed area southeast of pond. Note old farm building. Area between stream and pond should be evaluated





Disturbed area southeast of pond.  
Looking toward wetland area identified  
on NWI not disclosed by developer. (3)



ACOE Violation Area – Reseeded (3)







Cattails cut down in forefront,  
Willows in rear. Beige remnants  
of phragmites throughout. (3)

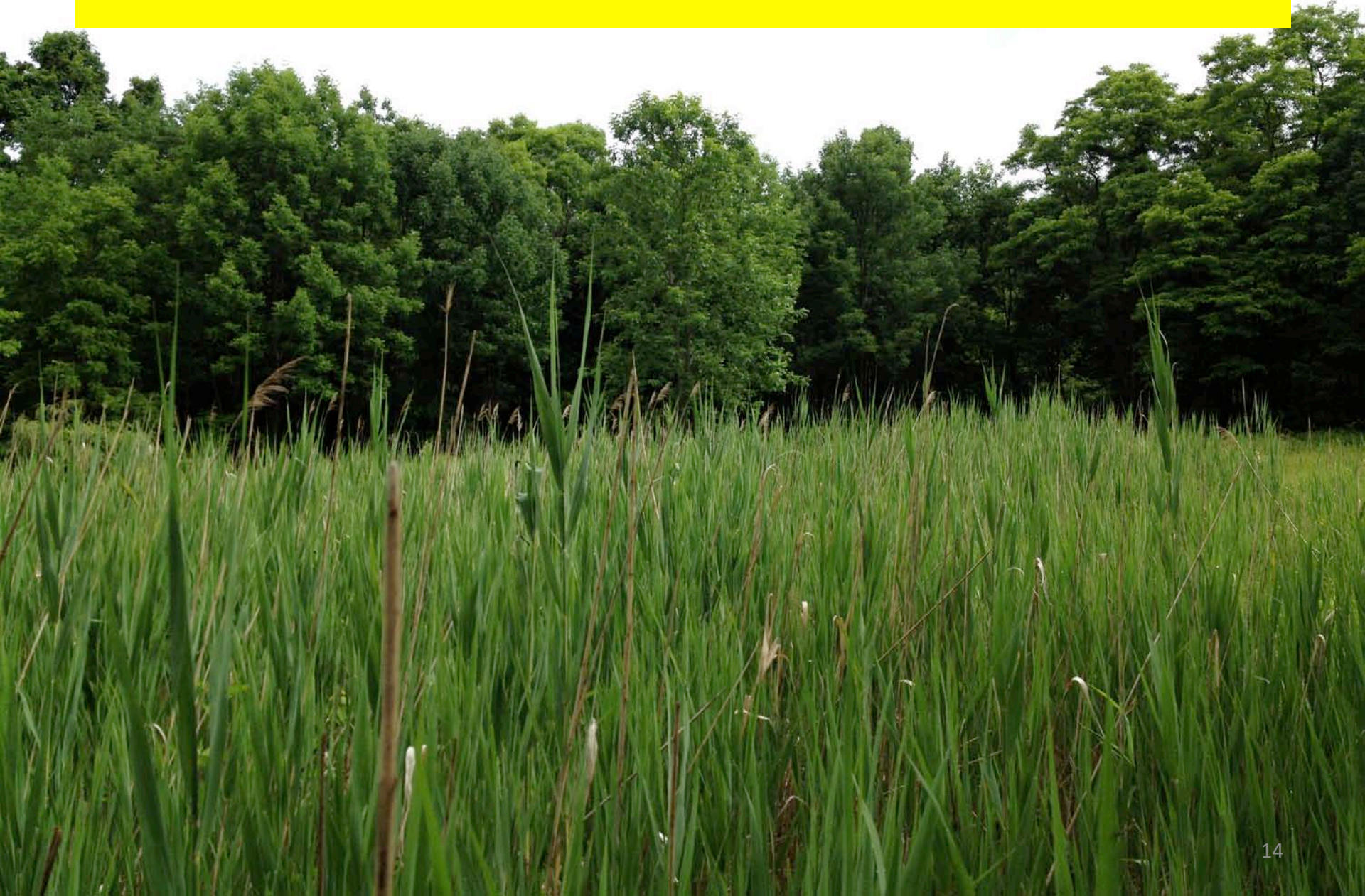




Meadow between farm house and pond. Facing pond.  
Note Phragmites, sedges and willows (4)



# Meadow between farm house and pond. Facing North (4)



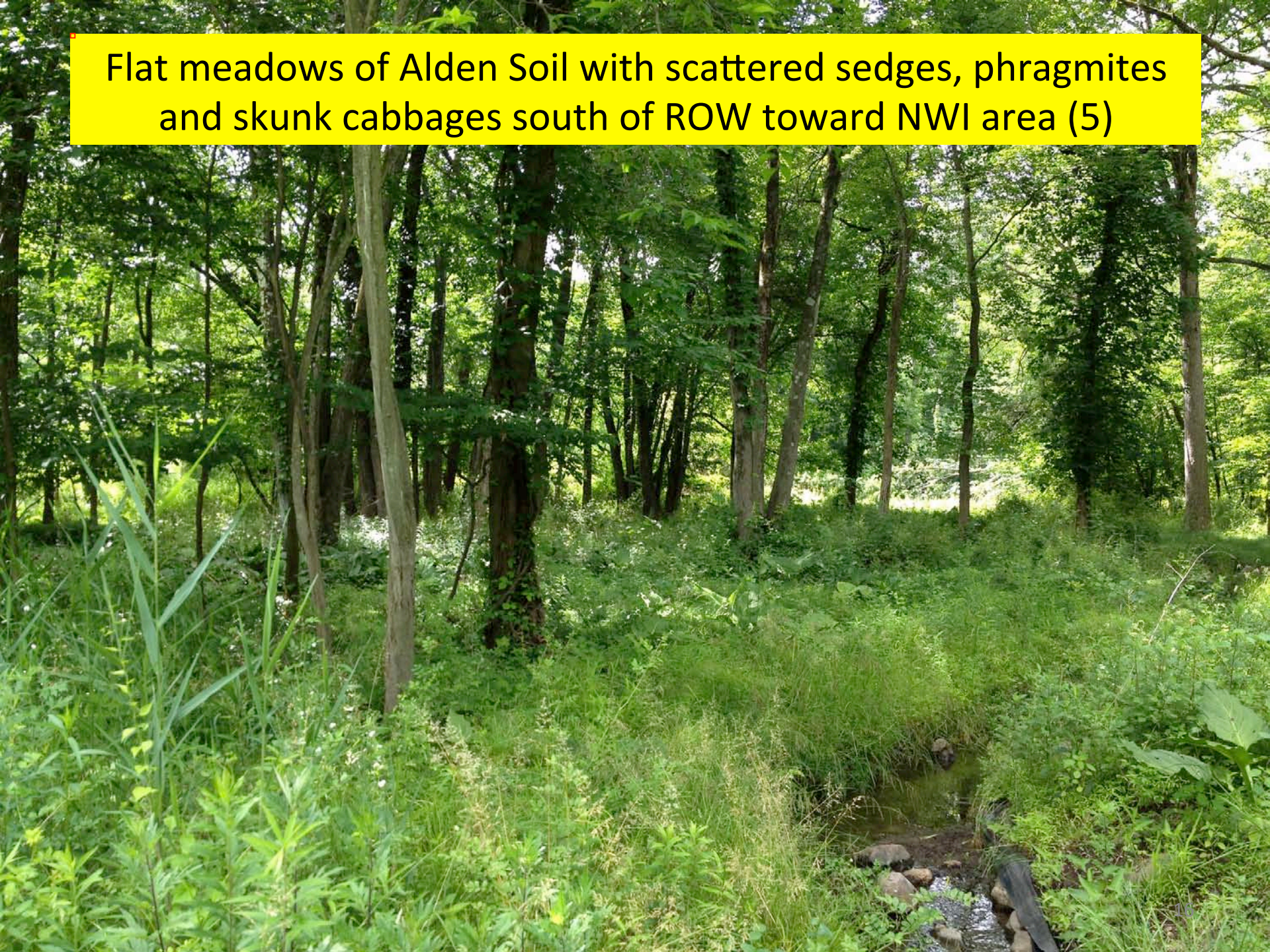


Maintained ROW easement between pond and NWI area on alden soil with scattered sedges, phragmites + cabbages (5)



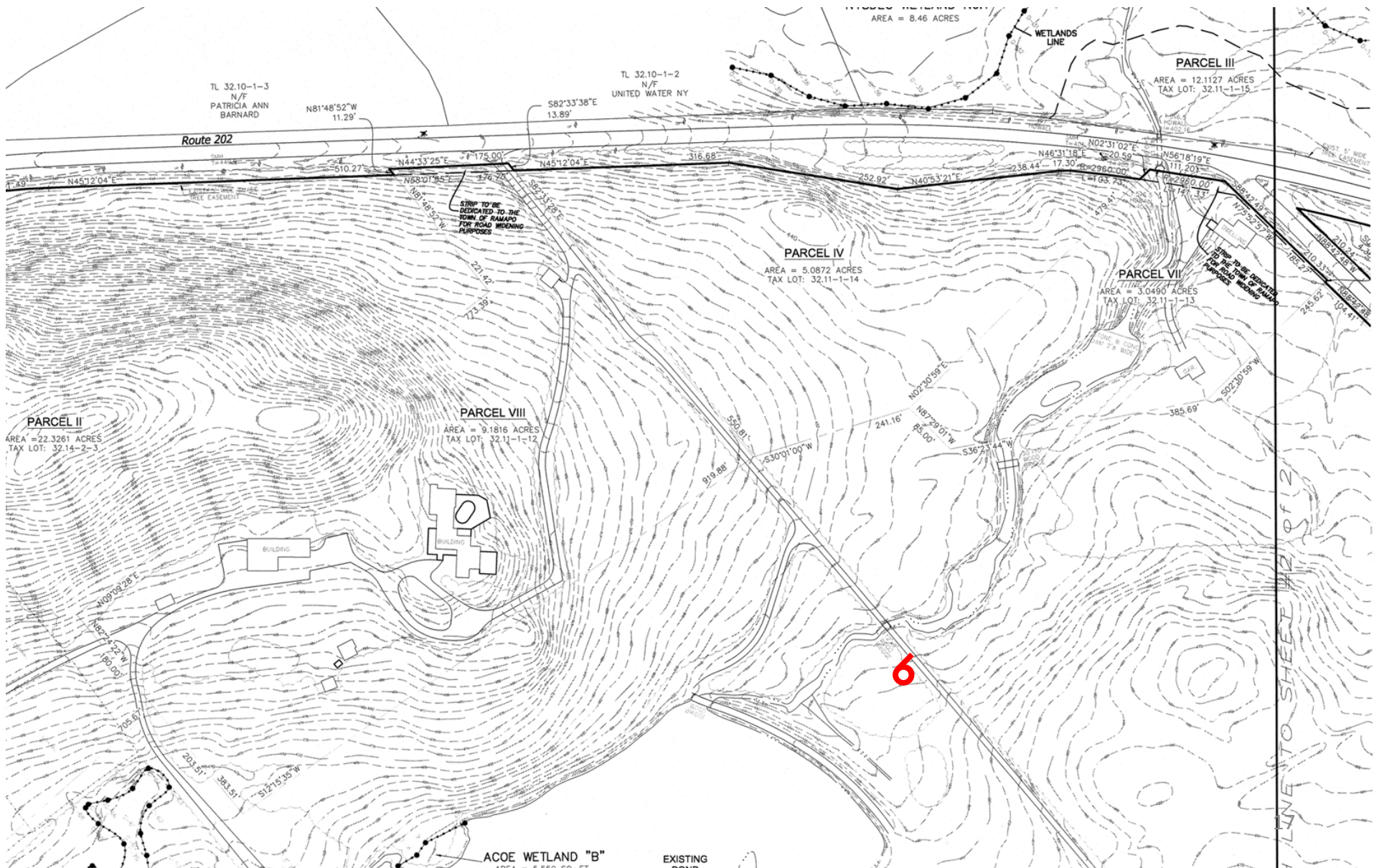


Flat meadows of Alden Soil with scattered sedges, phragmites and skunk cabbages south of ROW toward NWI area (5)





# MAP: Pond Connects to NYDEC Wetland







Wetland plants extend far from banks of stream downstream from pond (6)





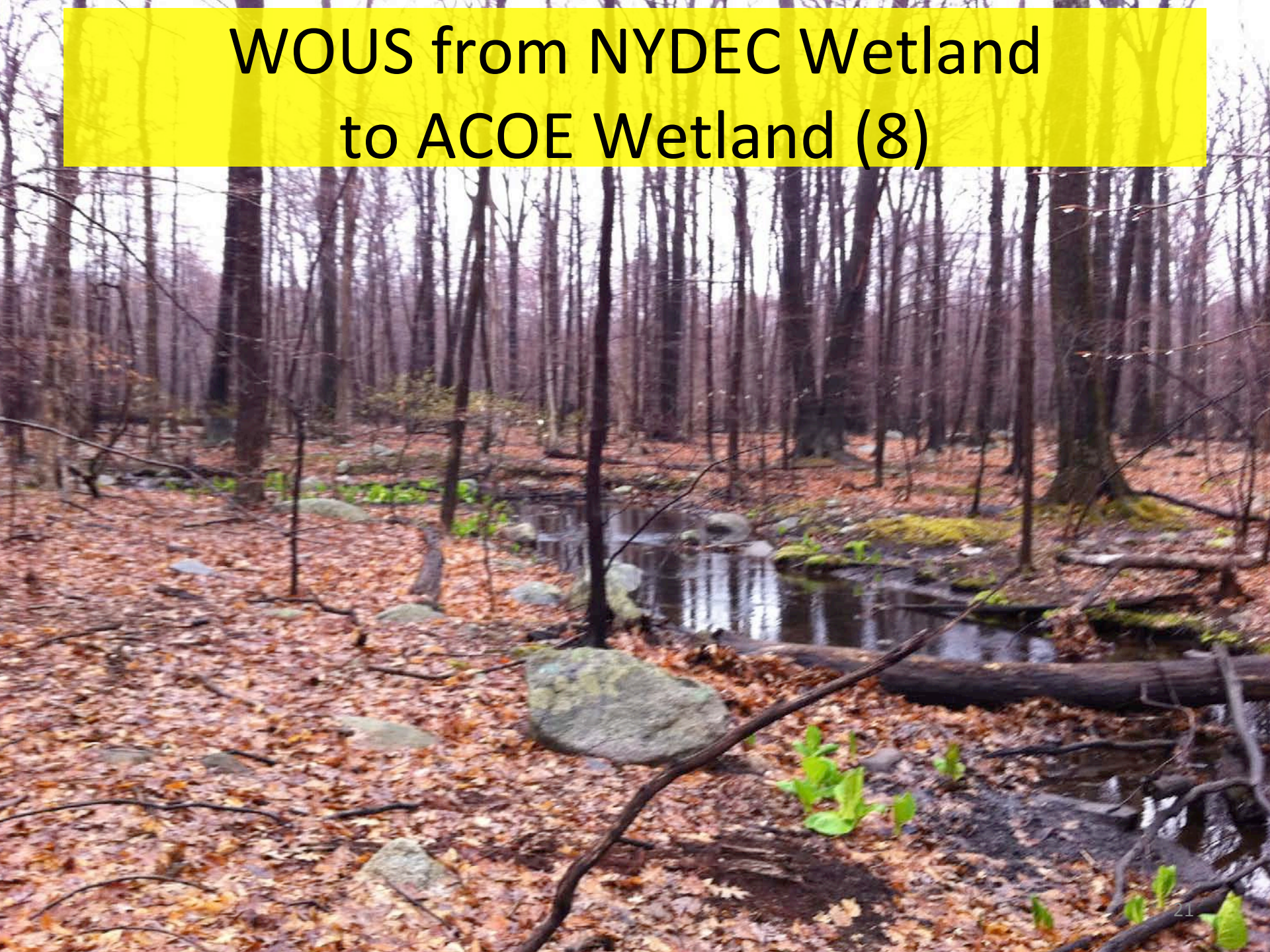


Wooded areas north of TH-30 contain woodland seeps and pools throughout flowing to WOUS (8)





# WOUS from NYDEC Wetland to ACOE Wetland (8)







Wetland plants extend past stream banks  
in heavy woods